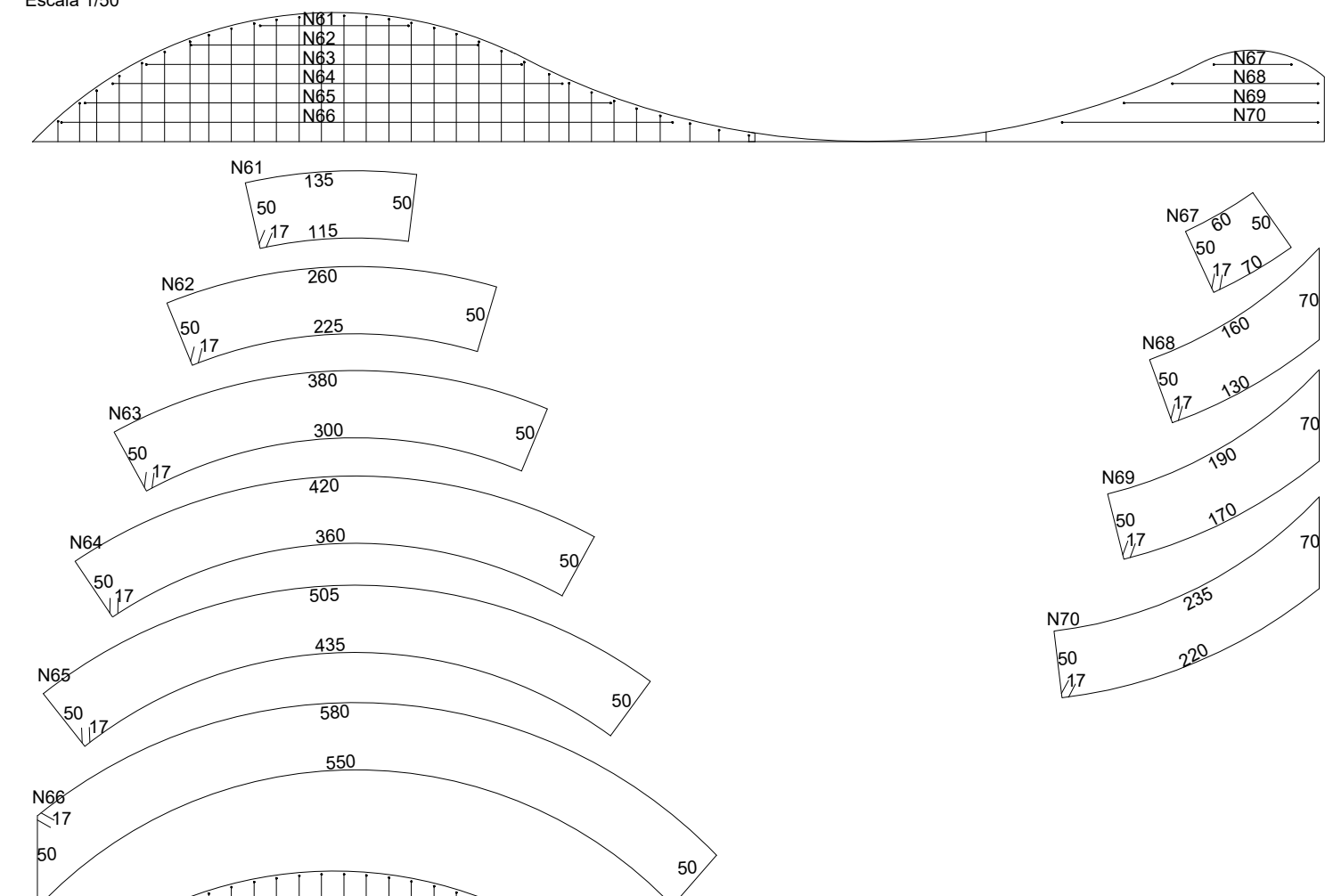
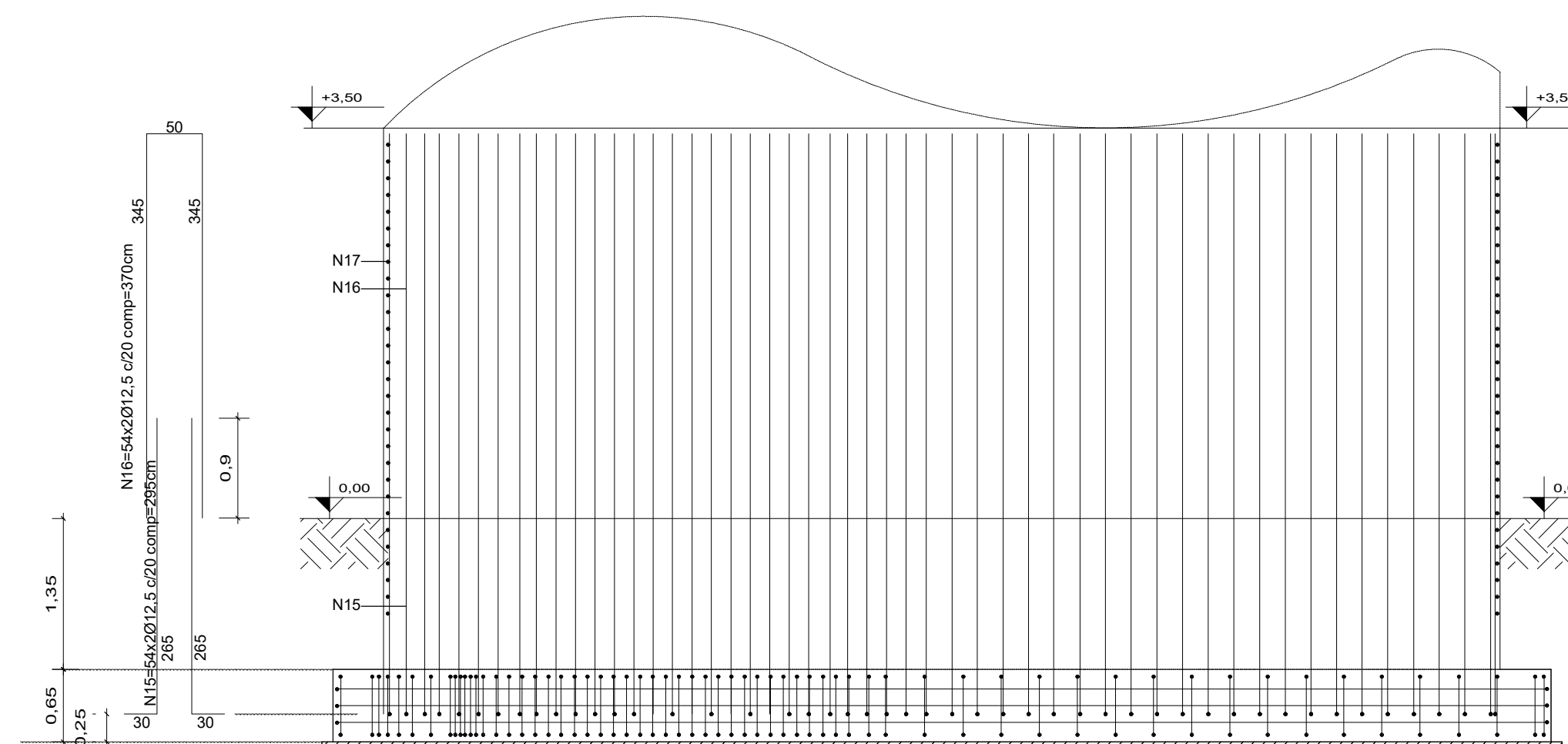
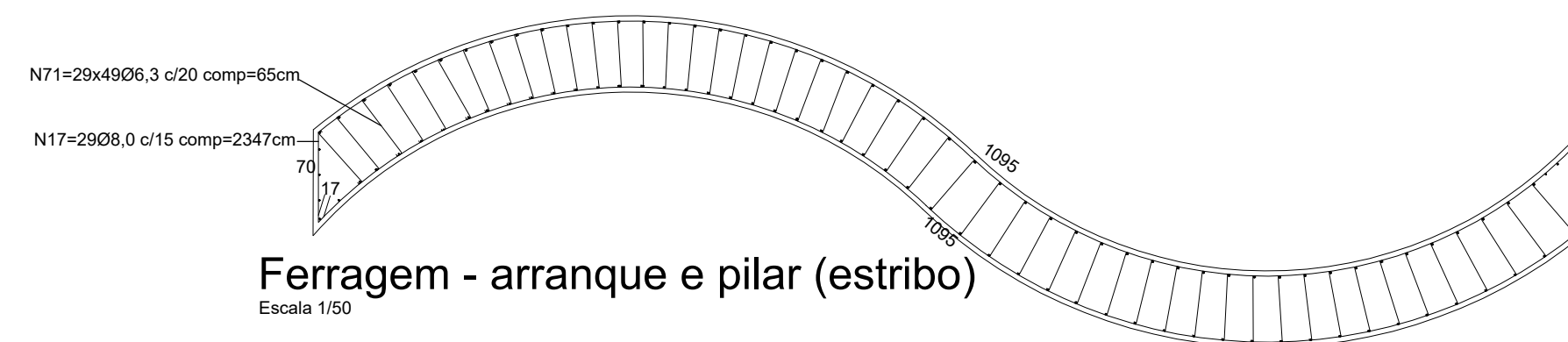


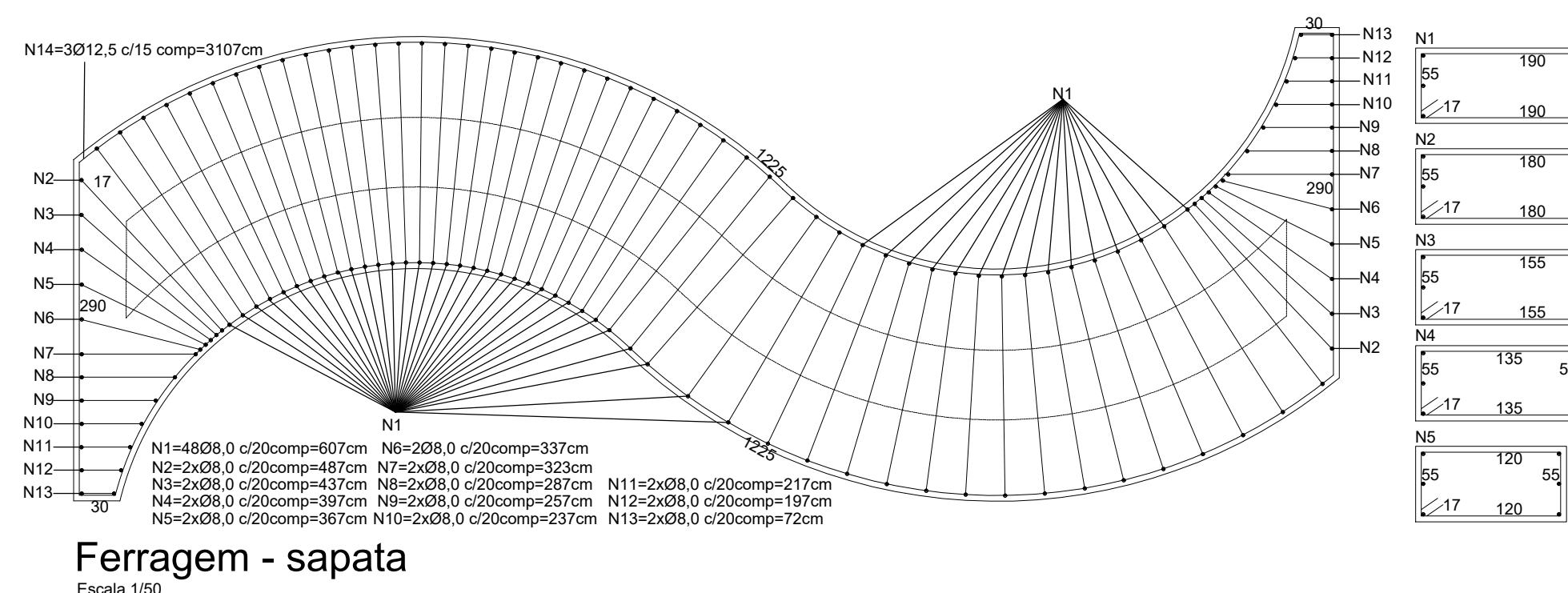
Ferragem - ondulação superior do pilar (estribo)
Escala 1/50



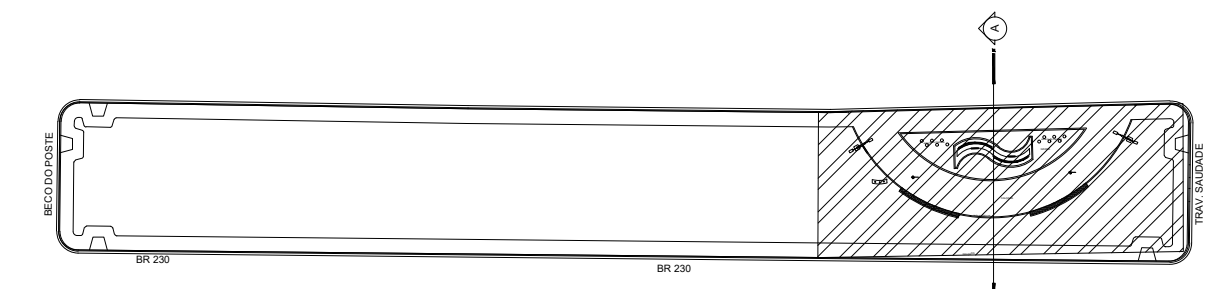
Ferragem - arranque e pilar (estribo)
Escala 1/50



Ferragem - arranque e pilar
Escala 1/50



Ferragem - sapata
Escala 1/50



croqui de referência
S/Escala

RESUMO DE AÇO DO MONUMENTO							
AÇO	DIAM (mm)	QUANT (un)	POSICÃO	COMP (m)	PESOS		
					DOIS PILARES		
Estribo	CA-50-A	8.0mm	N1	607	291.36	0.393	114.50
			N2	487	9.74	0.393	3.82
			N3	437	6.74	0.393	3.43
			N4	397	7.94	0.393	3.12
			N5	367	7.34	0.393	2.89
			N6	337	6.74	0.393	2.64
			N7	323	6.46	0.393	2.53
			N8	287	5.74	0.393	2.25
			N9	257	5.14	0.393	2.02
			N10	237	4.74	0.393	1.86
			N11	217	4.34	0.393	1.70
			N12	197	3.94	0.393	1.55
			N13	72	1.44	0.393	0.60
Barra	CA-50-A	12.5mm	N14	3107	93.21	0.888	92.09
			N15	295	31.86	0.888	31.47
			N16	370	11.84	0.888	11.70
			N17	2347	680.63	0.393	267.50
			N18	160	1.60	0.888	1.58
			N19	188	1.88	0.888	1.85
			N20	208	2.08	0.888	2.05
			N21	232	2.32	0.888	2.29
			N22	260	2.60	0.888	2.47
			N23	288	2.88	0.888	2.64
			N24	284	2.84	0.888	2.80
			N25	294	2.94	0.888	2.90
			N26	304	3.04	0.888	3.00
N27	312	3.12	0.888	3.04			
N28	318	3.18	0.888	3.20			
N29	322	3.22	0.888	3.18			
N30	324	3.24	0.888	3.20			
N31	324	3.24	0.888	3.20			
N32	322	3.22	0.888	3.18			
N33	318	3.18	0.888	3.14			
N34	314	3.14	0.888	3.10			
N35	308	3.08	0.888	3.02			
N36	296	2.96	0.888	2.92			
N37	284	2.84	0.888	2.80			
N38	270	2.70	0.888	2.68			
N39	252	2.52	0.888	2.48			
N40	234	2.34	0.888	2.31			
N41	220	2.20	0.888	2.17			
N42	206	2.06	0.888	2.03			
N43	182	1.82	0.888	1.89			
N44	160	1.60	0.888	1.77			
N45	170	1.70	0.888	1.67			
N46	158	1.58	0.888	1.56			
N47	148	1.38	0.888	1.36			
N48	138	1.38	0.888	1.36			
N49	138	1.38	0.888	1.36			
N50	142	1.42	0.888	1.46			
N51	162	1.54	0.888	1.58			
N52	164	1.64	0.888	1.62			
N53	178	1.78	0.888	1.75			
N54	196	1.96	0.888	1.93			
N55	238	2.18	0.888	2.13			
N56	234	2.34	0.888	2.31			
N57	234	2.34	0.888	2.30			
N58	260	2.60	0.888	2.56			
N59	254	2.54	0.888	2.50			
N60	232	2.32	0.888	2.29			
N61	207	3.87	0.393	1.44			
N62	602	6.02	0.393	2.36			
N63	797	7.97	0.393	3.13			
N64	887	8.87	0.393	3.52			
N65	1027	10.27	0.393	4.15			
N66	1247	12.47	0.393	4.90			
N67	287	2.87	0.393	0.97			
N68	427	4.27	0.393	1.59			
N69	477	4.77	0.393	1.87			
N70	572	5.72	0.393	2.24			
N71	607	6.07	0.393	2.31			
N72	607	6.07	0.393	2.31			
N73	607	6.07	0.393	2.31			
N74	607	6.07	0.393	2.31			
N75	607	6.07	0.393	2.31			
N76	607	6.07	0.393	2.31			
N77	607	6.07	0.393	2.31			
N78	607	6.07	0.393	2.31			
N79	607	6.07	0.393	2.31			
N80	607	6.07	0.393	2.31			
N81	607	6.07	0.393	2.31			
N82	607	6.07	0.393	2.31			
N83	607	6.07	0.393	2.31			
N84	607	6.07	0.393	2.31			
N85	607	6.07	0.393	2.31			
N86	607	6.07	0.393	2.31			
N87	607	6.07	0.393	2.31			
N88	607	6.07	0.393	2.31			
N89	607	6.07	0.393	2.31			
N90	607	6.07	0.393	2.31			
N91	607	6.07	0.393	2.31			
N92	607	6.07	0.393	2.31			
N93	607	6.07	0.393	2.31			
N94	607	6.07	0.393	2.31			
N95	607	6.07	0.393	2.31			
N96	607	6.07	0.393	2.31			
N97	607	6.07	0.393	2.31			
N98	607	6.07	0.393	2.31			
N99	607	6.07	0.393	2.31			
N100	607	6.07	0.393	2.31			
N101	607	6.07	0.393	2.31			
N102	607	6.07	0.393	2.31			
N103	607	6.07	0.393	2.31			
N104	607	6.07	0.393	2.31			
N105	607	6.07	0.393	2.31			
N106	607	6.07	0.393	2.31			
N107	607	6.07	0.393	2.31			
N108	607	6.07	0.393	2.31			
N109	607	6.07	0.393	2.31			
N110	607	6.07	0.393	2.31			
N111	607	6.07	0.393	2.31			
N112	607	6.07	0.393	2.31			
N113	607	6.07	0.393	2.31			
N114	607	6.07	0.393	2.31			
N115	607	6.07	0.393	2.31			
N116	607	6.07	0.393	2.31			
N117	607	6.07	0.393	2.31			
N118	607	6.07	0.393	2.31			
N119	607	6.07	0.393	2.31			
N120	607	6.07	0.393	2.31			
N121	607	6.07	0.393	2.31			
N122	607	6.07	0.393	2.31			
N123	607	6.07	0.393	2.31			
N124	607	6.07	0.393	2.31			
N125	607	6.07	0.393	2.31			
N126	607	6.07	0.393	2.31			
N127	607	6.07	0.393	2.31			
N128	607	6.07	0.393	2.31			
N129	607	6.07	0.393	2.31			
N130	607	6.07	0.393	2.31			
N131	607	6.07	0.393	2.31			
N132	607	6.07	0.393	2.31			
N133	607	6.07	0.393	2.31			
N134	607	6.07	0.393	2.31			
N135	607	6.07	0.393	2.31			
N136	607	6.07	0.393	2.31			
N137	607	6.07	0.393	2.31			
N138	607	6.07	0.393	2.31			
N139	607	6.07	0.393	2.31			
N140	607	6.07	0.393	2.31			
N141	607	6.07	0.393	2.31			
N142	607	6.07	0.393	2.31			
N143	607	6.07	0.393	2.31			
N144	607	6.07	0.393	2.31			
N145	607	6.07	0.393	2.31			
N146	607	6.07	0.393	2.31			
N147	607	6.07	0.393	2.31			
N148	607	6.07	0.393	2.31			
N149	607	6.07	0.393	2.31			
N150	607	6.07	0.393	2.31			
N151	607	6.07	0.393	2.31			
N152	607	6.07	0.393	2.31			
N153	607	6.07	0.393	2.31			
N154	607	6.07	0.393	2.31			
N155	607	6.07	0.393	2.31			
N156	607	6.07	0.393	2.31			
N157	607	6.07	0.393	2.31			
N158	607	6.07	0.393	2.31			
N159	607	6.07	0.393	2.31			
N160	607	6.07	0.393	2.31			
N161	607	6.07	0.393	2.31			
N162	607	6.07	0.393	2.31			
N163	607	6.07	0.393	2.31			
N164	607	6.07	0.393	2.31			
N165	607	6.07	0.393	2.31			
N166	607	6.07	0.393	2.31			
N167	607	6.07	0.393	2.31			
N168	607	6.07	0.393	2.31			
N169	607	6.07	0.393	2.31			
N170	607	6.07	0.393	2.31			
N171	607	6.07	0.393	2.31			
N172	607	6.07	0.393	2.31			
N173	607	6.07	0.393	2.31			
N174	607	6.07	0.393	2.31			
N175	607	6.07	0.393	2.31			
N176	607	6.07	0.393	2.31			
N177	607	6.07	0.393	2.31			
N178	607	6.07	0.393	2.31			
N179	607	6.07	0.393	2.31			
N180	607	6.07	0.393	2.31			
N181	607	6.07	0.393	2.31			
N182	607	6.07	0.393	2.31			
N183	607	6.07	0.393	2.31			
N184	607	6.07	0.393	2.31			
N185	607	6.07	0.393	2.31			
N186	607	6.07	0.393	2.31			
N187	607	6.07	0.393	2.31			
N188	607	6.07	0.393	2.31			
N189	607	6.07	0.393	2.31			
N190	607	6.07	0.393	2.31			
N191	607	6.07	0.393	2.31			
N192	607	6.07	0.393	2.31			
N193	607	6.07	0.393	2.31			
N194	607	6.07	0.393	2.31			
N195	607	6.07	0.393	2.31			
N196	607	6.07	0.393	2.31			
N197	607	6.07	0.393	2.31			
N198	607	6.07	0.393	2.31			
N199	607	6.07	0.393	2.31			
N200	607	6.07	0.393	2.31			
N201	607	6.07	0.393	2.31			
N202	607	6.07	0.393	2.31			
N203	607	6.07	0.393	2.31			
N							